

Sophiensæle



Rent Sophiensæle



House

Spaces

Festsaal

Hochzeitssaal

Kantine

Room 213

Service

Contact

Hall plans

House

Sophiensæle is one of the most important production and performance venues for independent theater in the German-speaking area. The eventful history of the old building and its original purpose as a place of assembly, education and celebration can still be felt in the architecture of the building, on the walls and ceilings of the rooms, creating a unique setting for events. After a careful partial renovation in 2011, the building offers optimal technical equipment and a high level of comfort for audiences and guests, while preserving its historical traces.

Hard facts—an overview:

- For non-public or non-artistic events, you can rent the rooms in this extraordinary building.
- Sophiensæle is centrally located and easily accessible in the heart of the city and is ideal for conferences, meetings, receptions, workshops, photo shoots, film shoots and much more.
- The Festsaal (Festival Hall) can accommodate up to 250 people, while the adjoining foyer can hold 100 people.
- For smaller events, the Hochzeitssaal (Wedding Hall) with its own foyer can be rented. It is approved for a maximum of 100 people.
- The Kantine (Canteen) on the ground floor also accommodates a maximum of 100 people and is directly accessible from the courtyard.
- Room 213 can accommodate up to 30 people.
- Depending on availability, the rooms can be rented individually or as a whole. In total, the building is approved for a maximum of 350 people at a time.

History

Sophiensæle is located in the former Handwerkervereinshaus (Craftsmen's Association Building), whose eventful history began with its construction in 1904/1905. It is located on one of the oldest streets in the Spandauer Vorstadt district: the over 300-year-old Sophienstraße. Founded in 1844, the Berlin Craftsmen's Association was a special form of workers' educational association: its purpose was the professional training of craftsmen, their preparation for the master craftsman's examination, but also social gatherings.

The H-shaped building complex consists of over 90 rooms: the ground floor of the transverse building, which was once the main building of the clubhouse, housed the Virchow Hall, a library, a restaurant and the boardroom. The foyer, which still exists today, led to the ballroom on the first floor. A total of approximately 1,400 guests could be accommodated in the unseated hall; nowadays, according to current fire safety regulations, a maximum of 250 people are permitted. On the third floor, additional rooms could be found, such as the wedding room, which was used, among other things, to host club celebrations such as weddings. In reference to this, the hall is still called the Hochzeitssaal (Wedding Hall) today.

A new beginning as a theater

In September 1996, Sophiensæle opened with the premiere of Sasha Waltz's successful play *Allee der Kosmonauten* as a production and performance venue for independent theater. In 2011, the building underwent partial renovation. Since 2023, Jens Hillje and Andrea Niederbuchner are the Artistic and Managing directors of Sophiensæle.

Spaces

Festsaal



Festsaal

Floor:	1
Size:	approx. 480 m ² (24 m × 20 m)
Ceiling height:	8,60 m
Number of persons:	max. 250
Equipment:	flexible grandstand, 16 m × 8 m
Flooring:	Wooden floor, 3S panel, black
Sanitary facilities:	5 all-gender toilets and 1 accessible toilet in the Festsaal foyer
Backstage:	Separate backstage area with toilet and shower
Access:	via two staircases and the elevator
Delivery:	via elevator or staircases
Power connections:	Various 16A Schuko connections, as well as 5 × 16A Schuko via isolation transformer (audio current). If required, there is an additional 63, 32, 16A high-voltage connection
Important note:	The gallery is not open to visitors
Technology:	Blackout and ventilation systems are permanently installed, lighting, sound, and video technology as required
Event formats:	Conferences, meetings, receptions, photo shoots, film shoots, corporate events and much more

The centerpiece of Sophiensæle is the approximately 480 square meter Festsaal (Festival Hall), which extends over two floors with a ceiling height of 8.60 meters. It is located on the first floor and can be reached via a spacious staircase and a lift. In front of the Festsaal is a spacious foyer with a mobile bar and sanitary facilities, which can be flexibly furnished and used. The Festsaal is enclosed on three sides by an open gallery suspended freely in the room, with tall windows on the long sides. The mobile grandstand can be positioned at the front or rear as required and can also be dismantled.

[Festsaal: Hall plan hier](#)

[Festsaal: Section hier](#)

[360° video tour Festsaal here](#)

Festsaal Foyer

The foyer in front of the Festsaal (Festival Hall) invites you to linger. It can be rented as an antechamber or separately for press conferences, meetings, or similar events on a smaller scale. The foyer is located directly next to the Festsaal on the first floor and can be reached via the left staircase and an elevator. You can decide flexibly on the furnishings; a mobile bar is available. The sanitary facilities are located at the rear of the foyer.

Festsaal Foyer: Hall plan + section hier

[360° video tour foyer Festsaal here](#)

Floor:	1
Size:	approx. 135 m ²
Ceiling height:	4,60 m
Number of persons:	max. 100
Equipment:	mobile bar, furniture if required
Flooring:	Screed
Sanitary facilities:	5 all-gender toilets and 1 accessible toilet
Access:	via the left staircase, the Festival Hall and the elevator
Power connections:	2 × 16A CEE, 2 × 32A CEE, 6 × 16A Schuko
Technology:	Ventilation system, lighting and sound technology permanently installed
Event formats:	Conferences, meetings, receptions, photo shoots, film shoots, corporate events and much more

Hochzeitssaal



Hochzeitssaal

The Hochzeitssaal (Wedding Hall), which measures approximately 240 square meters, is mainly used for smaller productions and rehearsals. The use of the space and its seating arrangements are flexible. Traces of the original architecture can still be seen on the walls and windows of the space, and a generous window front facing the inner courtyard provides plenty of light. Access to the third floor is via both stairwells or the lift. Sanitary facilities and a separate foyer with kitchen are located in front of the Hochzeitssaal.

Hochzeitssaal: Hall plan + section hier

360° video tour Hochzeitssaal

Floor:	3
Size:	approx. 240 m ² (12 m × 20 m)
Ceiling height:	3,70 m
Number of persons:	max. 100
Equipment:	flexible grandstand with seat cushion, 6 m × 12 m
Flooring:	Wooden floor, 3S panels
Sanitary facilities:	5 all-gender toilets on the 3rd floor, including 1 toilet with an entrance and cubicle door 81 cm wide
Backstage:	Separate backstage with toilet and shower
Access:	via both staircases and the elevator
Facilities:	Bar in the foyer
Power connections:	2 × 16A CEE, 2 × 32A CEE, 4 × 16A Schuko
Technology:	Blackout and ventilation systems are permanently installed, lighting, sound and video technology as required
Event formats:	Conferences, meetings, workshops and much more

Hochzeitssaal Foyer

The foyer of the Hochzeitssaal (Wedding Hall) on the 3rd floor can also be rented as required. Equipped with a kitchen, the room is suitable for smaller receptions and meetings. An ensemble of two iceboxes from 1905 with the accompanying original buffet gives the bright, friendly room a special charm. Toilets are connected to the foyer.

Hochzeitssaal Foyer: Hall plan + section hier

Floor:	3
Size:	approx. 54,80 m ² (8,5 m × 6,45 m) / effective usable area approx. 39 m ²
Ceiling height:	3,70 m
Number of persons:	max. 30
Facilities:	Bar with kitchenette (electric stove, dishwasher, microwave)
Flooring:	Linoleum
Sanitary facilities:	5 all-gender toilets on the 3rd floor, including 1 toilet with an entrance and cubicle door 81 cm wide
Access:	via both staircases and the elevator
Power connections:	2 × 16A Schuko
Technology:	Permanently installed lighting and sound
Event formats:	Small receptions, talks and much more

Kantine

Kantine

The Sophiensæle Kantine (Canteen) is located on the ground floor and is directly accessible from the building's inner courtyard. The name derives from the original use of the space during the craftsmen's association era, when it served as a canteen. Four columns divide the canteen along its long side, giving it a special character. Since 2011, the Kantine has been used for smaller events with bar service, open formats, lectures and discussions, among other things. The room can be customized depending on the occasion and is also suitable for readings, talks, receptions, workshops or rehearsals.

Kantine: Hall plan + section hier

360° video tour Kantine

Floor:	Ground Floor
Size:	in total: approx. 230 m ² , front part of the room incl. stage and bar area: approx. 180 m ² (9,23 m × 19,86 m)
Ceiling height:	4,2 m
Number of persons:	max. 100
Equipment:	flexible seating arrangements possible
Flooring:	Dance floor, white
Sanitary facilities:	Use of toilets in the opposite part of the building / ground floor
Backstage:	possible at the rear of the canteen
Access:	2 doors, directly accessible from the courtyard of the building
Power connections:	2 × 32A CEE, 1 × 16A CEE, 3 × 16A Schuko
Special features:	Permanently installed bar, standard furnishings with stage 6 m × 4 m × 0.66 m (can be dismantled), uneven floor
Technology:	Lighting, sound and video technology as required
Event formats:	Readings, receptions, workshops, rehearsals, small concerts, talks and much more

Room 213



Room 213

Room 213 is a charming room with beautiful ceiling stucco, located on the second floor of Sophiensæle. Thanks to its somewhat hidden and quiet location, it is ideal for rehearsals, workshops, meetings or similar events. A large window front facing the inner courtyard allows plenty of daylight into the room and creates a pleasant and focused working atmosphere. The sanitary facilities are accessible directly from the room.

Room 213: Hall plan + section hier

Floor:	2
Size:	approx. 50 m ²
Ceiling height:	max. 3,58 m, varies
Number of persons:	max. 50
Equipment:	flexible seating arrangements possible
Flooring:	Parquet
Sanitary facilities:	1 toilet, 1 shower
Access:	via the right staircase, not barrier-free
Power connections:	4 × 16A Schuko
Technology:	Lighting, sound and video technology as required
Event formats:	Workshops, meetings, small conferences, rehearsals and much more

Service

Prices

We would be happy to put together a customized offer for you, which can also include technical equipment and staff if desired.

Technical equipment

Sophiensæle has excellent lighting and sound equipment. We would be happy to provide you with a customized offer based on your requirements. If necessary, additional technical equipment can be rented .

Bar, service and admission

We would be happy to provide you with our staff for bar, service and admission as part of our offer.

Delivery

Access to the inner courtyard is via a gateway (see drawing for dimensions). The freight elevator is in the 2nd inner courtyard and has a height of 2.30 m and a width/depth of 1.76 m × 2.70 m.

Accessibility

The Kantine (Canteen) is at ground level and accessible without steps. The Festsaal (Festivall Hall) (1st floor) and Hochzeitssaal (3rd floor) can be reached via an elevator. The distance from the street to the elevator is approx. 60 m. Room 213 (2nd floor) cannot be reached via an elevator and thus isn't accessible.

An accessible toilet (entrance door 1m in width) is available on the 1st floor and can be reached via the elevator. It can be accessed via the Festsaal foyer. For events in the Hochzeitssaal (Wedding Hall) there is a WC on the 3rd floor with an entrance and cabin door 81 cm wide, the other cabin doors are 56 cm wide. From the 3rd floor as well as from the ground floor you can reach the accessible WC on the 1st floor by using the elevator.

Parking spaces for disabled people are available in the immediate vicinity: One parking space at Sophienstraße 21 (approx. 50 m away); two parking spaces at the corner of Rosenthaler/ Neue Schönhauser (Neue Schönhauser Str. 9, approx. 230 m away).

Sanitary facilities

There are several toilets on both the first and third floors. The Festsaal and Hochzeitssaal have a backstage with a shower. Room 213 (second floor) also has a toilet and shower. The sanitary facilities are directly accessible from the room.

Parking

For loading and unloading, you can park in the courtyard. The nearest car parks are on Spandauer Straße (about an 11-minute walk) and at Alexanderplatz (about a 14-minute walk). There are only a few parking spaces in the immediate vicinity.

How to get there

U Weinmeisterstraße (2 minutes' walk)
S Hackescher Markt (4 minutes' walk)
Tram M1, M4, M5, M6 (10 minutes' walk)

Smoking

Smoking is not permitted in Sophiensæle.

360° video tour

A virtual tour of Sophiensæle can be found on our [website](#).

Contact

Esther Beaufils

+49 (0)30 278 900-53

vermietung@sophiensaale.com

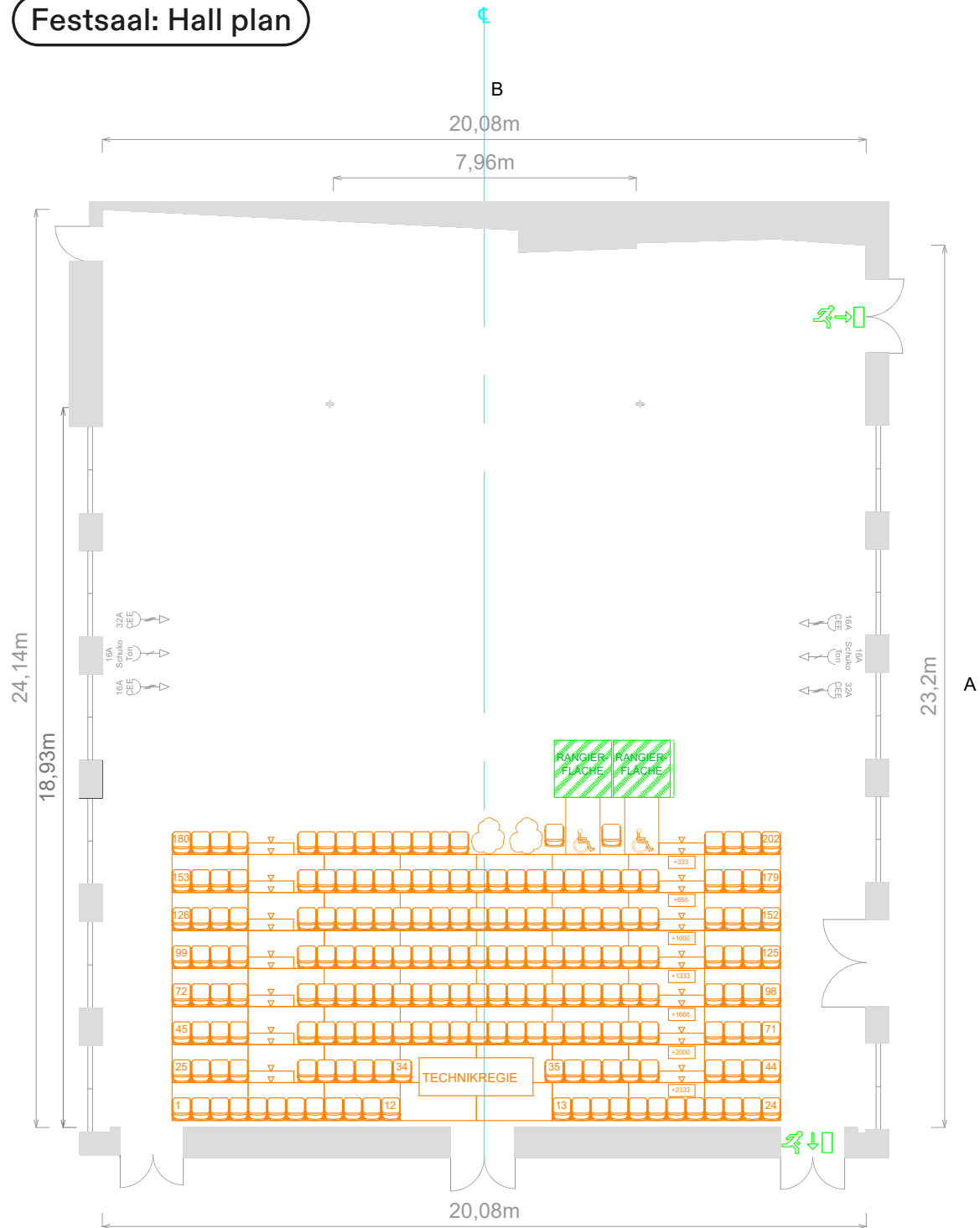
Sophienstraße 18

10178 Berlin-Mitte

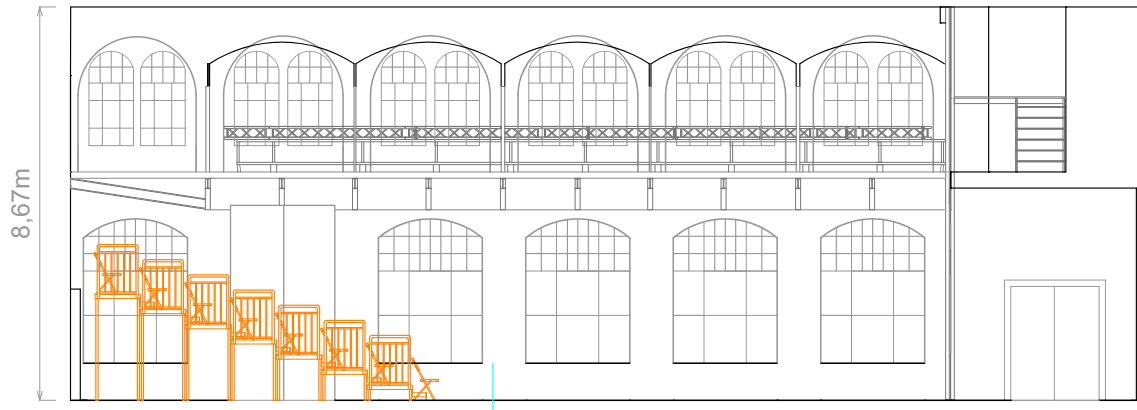
+49 (0)30 278 900-30

Hall plans

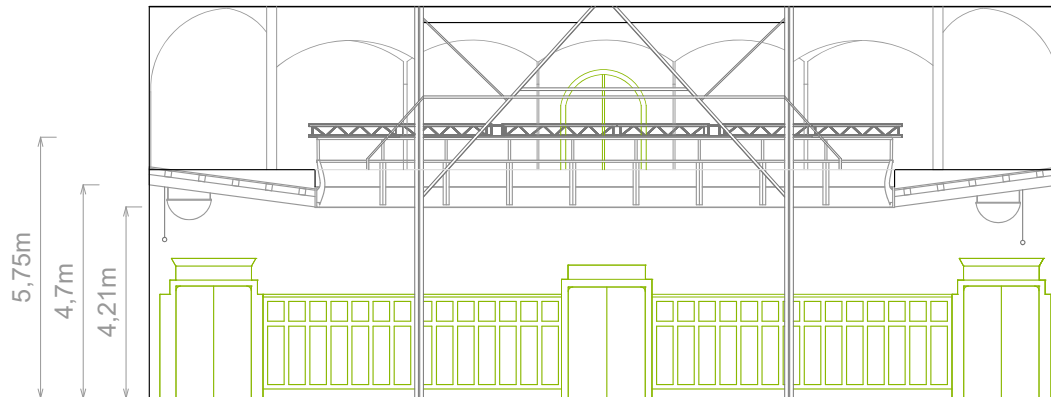
Festsaal: Hall plan



Festsaal: Section

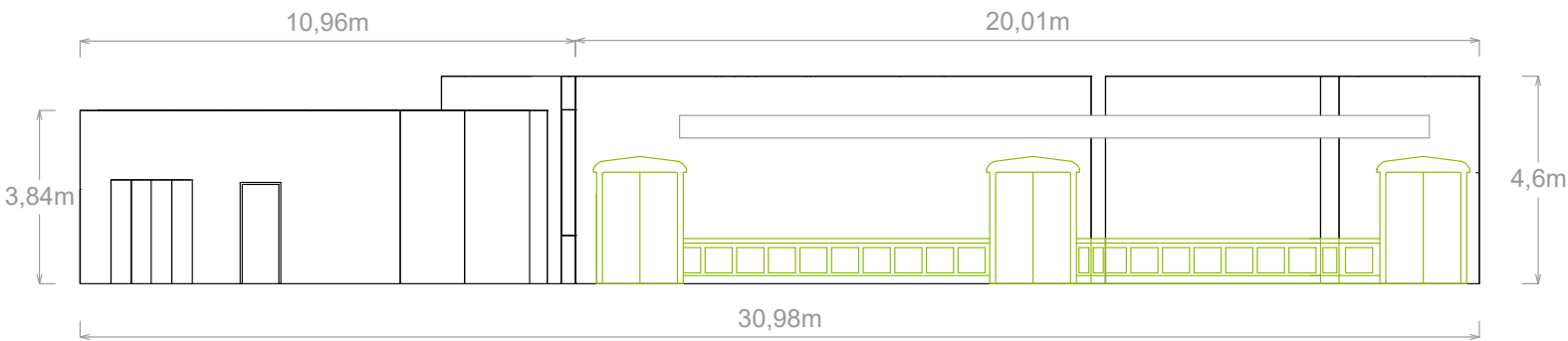
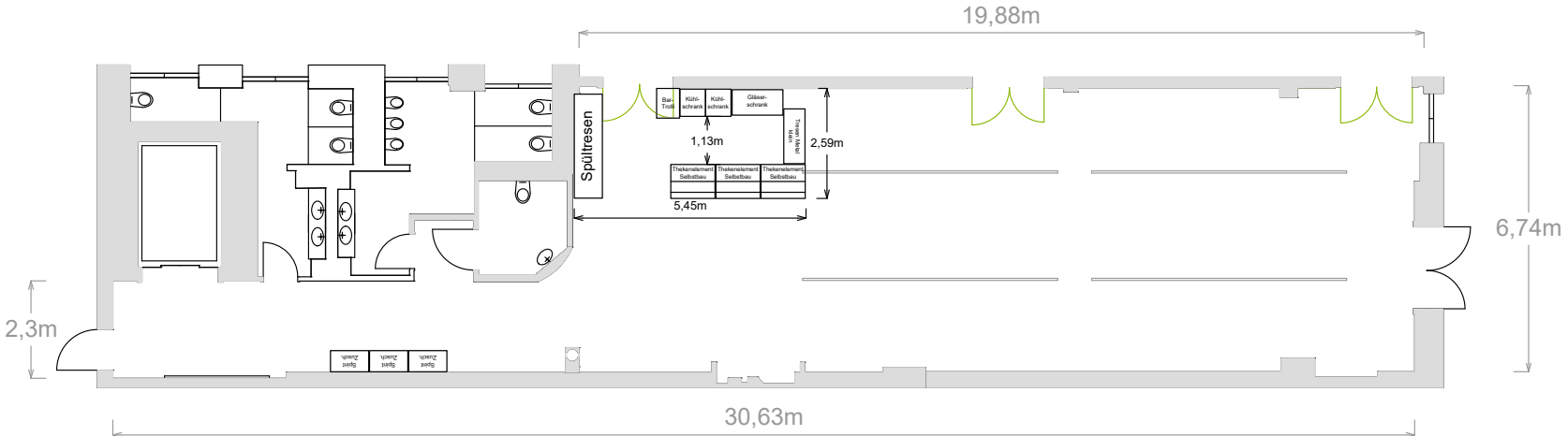


A

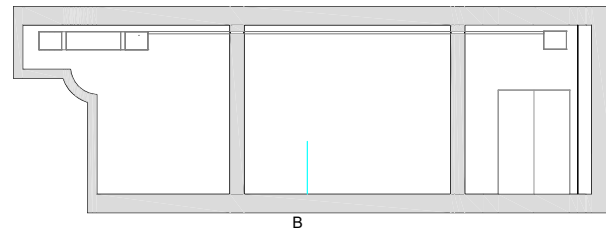
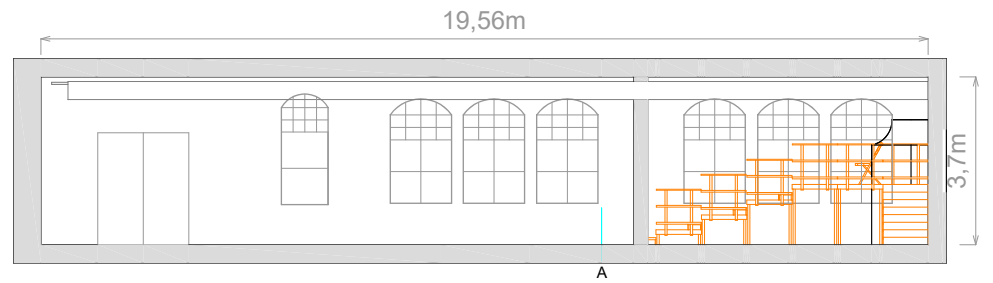
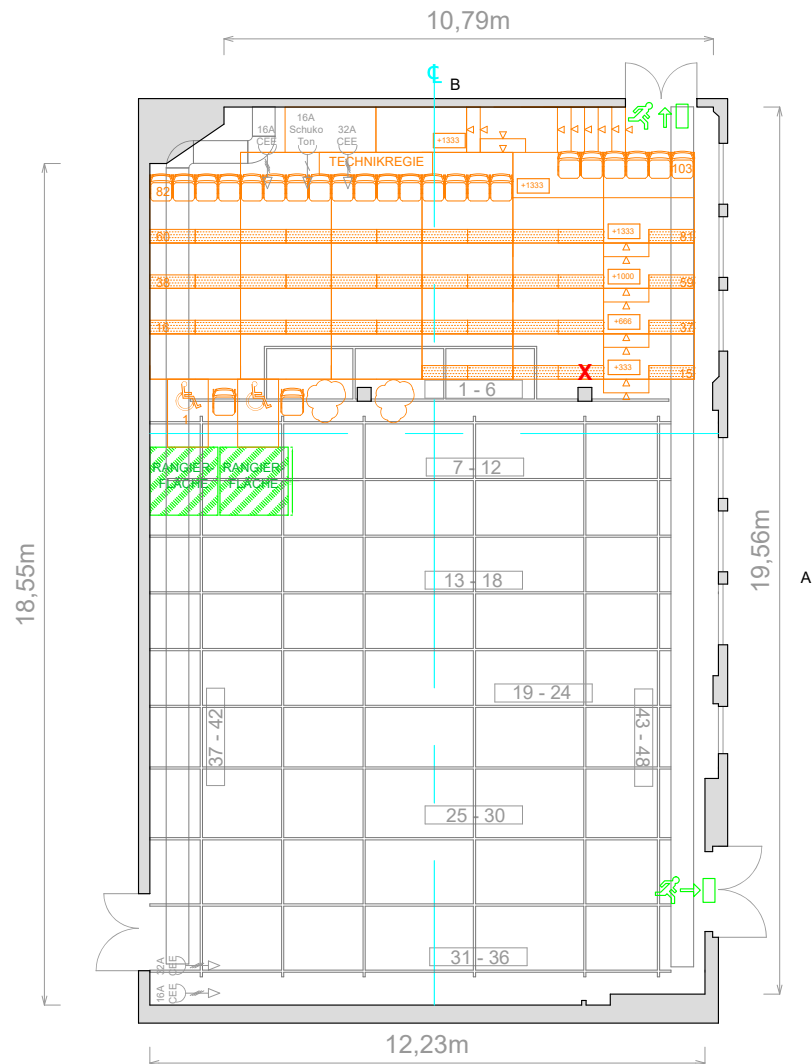


B

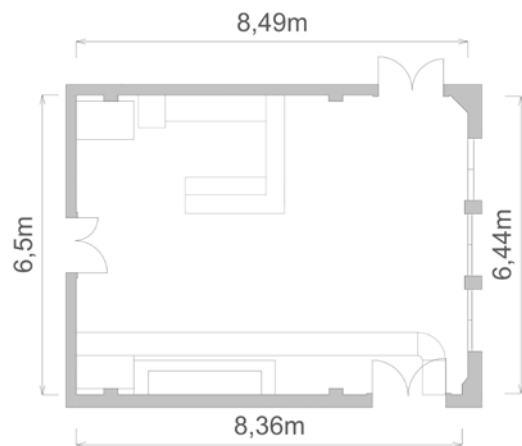
Festsaal Foyer: Hall plan + section



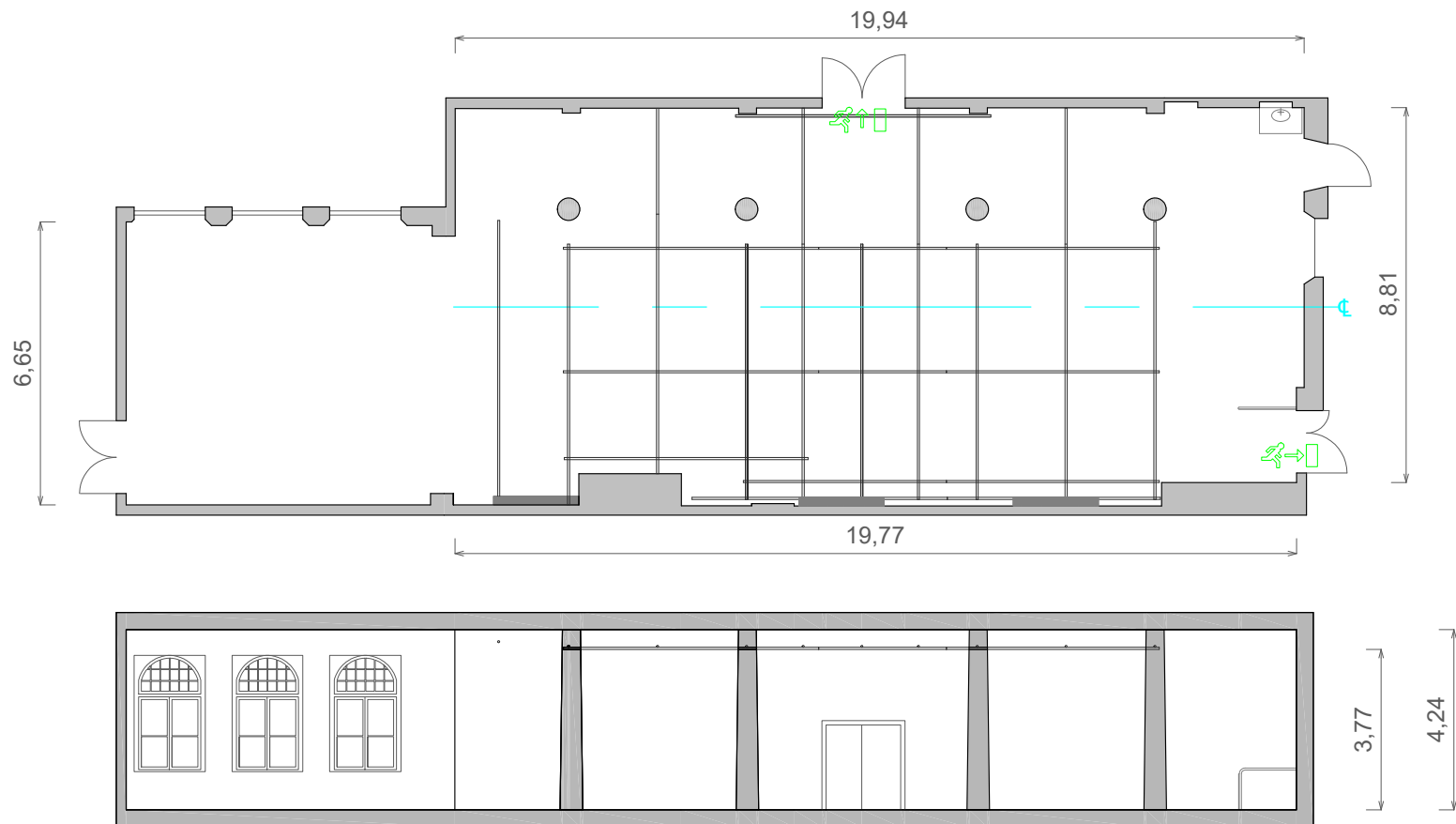
Hochzeitssaal: Hall plan + section



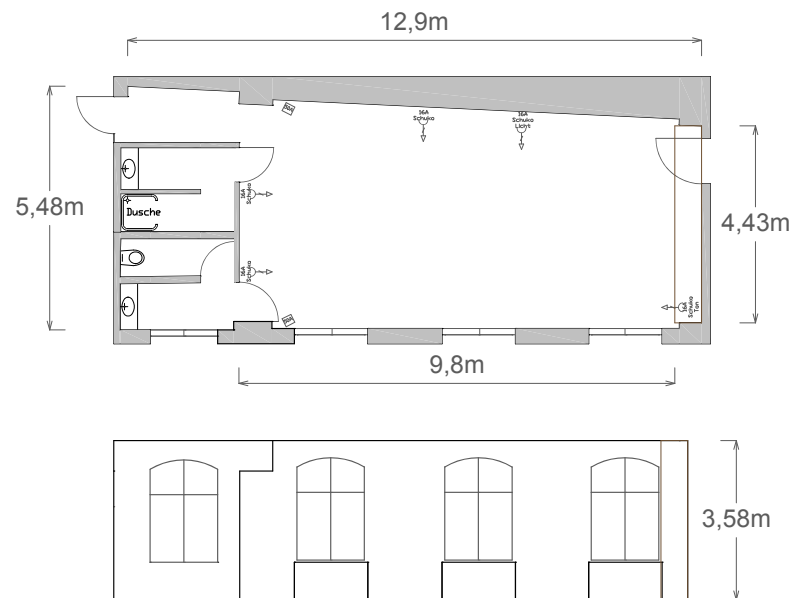
Hochzeitssaal Foyer: Hall plan + section



Kantine: Hall plan + section



Room 213: Hall plan + section



Sophiensæle

